



Sipna Shikshan Prasarak Mandals  
**SIPNA COLLEGE OF  
ENGINEERING & TECHNOLOGY,  
AMRAVATI**  
Accredited by NAAC with Grade 'A' | NBA Accredited  
IAO Certified | ISO Certified

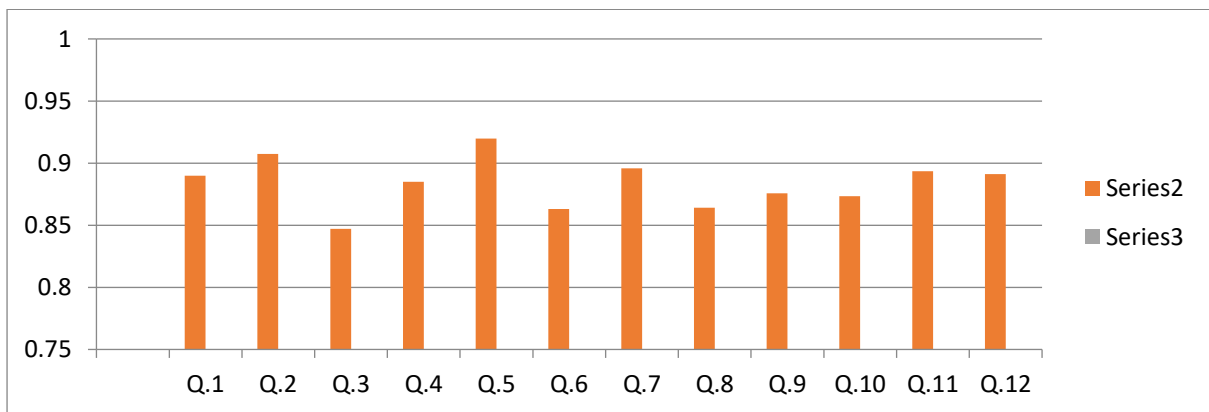


## 2.7 Student Satisfaction Survey

Student Satisfaction survey on overall Institutional performance for Academic year 2021-22 is done by using following Questionary

SR.NO	Questions	Percentage
1	Whether the infrastructure facilities are adequate?	89%
2	Whether labs are properly organized?	91%
3	Whether the internet facility is up to the mark ?	85%
4	Whether [roper water and electric supply is available?	88%
5	Whether services of library extended to students are adequate?	92%
6	Whether sport facilities extended to students are adequate?	86%
7	Whether Admin staff(Non -teaching)services extended to students are satisfactory?	90%
8	Whether on-campus drives organized by Training and Placement Department are adequate?	86%
9	Whether training provided by Training & Placement department is up to the mark?	88%
10	What is the overall feedback about Training & Placement department?	87%
11	Does Teacher-Guardian scheme help you solve your Problems?	89%
12	How do you rate Teacher-Guardian scheme in the scale of 1to 5?	89%

Questions	%	Percentage
Q.1	0.89	89%
Q.2	0.91	91%
Q.3	0.85	85%
Q.4	0.88	88%
Q.5	0.92	92%
Q.6	0.86	86%
Q.7	0.9	90%
Q.8	0.86	86%
Q.9	0.88	88%
Q.10	0.87	87%
Q.11	0.89	89%
Q.12	0.89	89%





# Exit Survey CSE



[Dashboard](#) / [Courses](#) / [EXIT\\_SURVEY\\_CSE](#)

Your progress



Announcements

## EXIT SURVEY COMPUTER SCIENCE AND ENGINEERING DEPARTMENT



BATCH 2018-2022 CSE(session 2021-2022)



This survey is for all Computer Science and Engineering students who are completing to final year engineering at the end of program irrespective of the results. This survey is in reference to the entire program and not for evaluation of final year engineering only.

Your participation in this survey is an important part of the department's accreditation process and will help the department to improve its program in the future.

**Please assess whether the objectives and out comes have been achieved and the level of achievement according to following scale:-**

Excellent (E)	Good (G)	Average (A)	Poor (P)	No Comment (NC)
5	4	3	2	1



# Exit Survey CSE

[Dashboard](#) / [Courses](#) / [EXIT\\_SURVEY\\_CSE](#) / [EXIT SURVEY COMPUTER SCIENCE AND ENGINEERING DEPARTMENT](#)  
/ [BATCH 2018-2022 CSE\(session 2021-2022\)](#)

## BATCH 2018-2022 CSE(session 2021-2022)



This survey is for all Computer Science and Engineering students who are completing to final year engineering at the end of program irrespective of the results. This survey is in reference to the entire program and not for evaluation of final year engineering only.

Your participation in this survey is an important part of the department's accreditation process and will help the department to improve its program in the future.

**Please assess whether the objectives and out comes have been achieved and the level of achievement according to following scale:-**

Excellent (E)	Good (G)	Average (A)	Poor (P)	No Comment (NC)
5	4	3	2	1

The questionnaire was closed on Thursday, 19 May 2022, 5:50 PM. Thanks.

[View All Responses](#)

[→ Announcements](#)

Jump to...

[BATCH 2013-2017 CSE\(session 2016-17\) \(hidden\)](#) →



# Exit Survey CSE

Dashboard / Courses / EXIT\_SURVEY\_CSE / EXIT SURVEY COMPUTER SCIENCE AND ENGINEERING DEPARTMENT / BATCH 2018-2022 CSE(session 2021-2022) / View All Responses / Summary / View Default order

[Advanced settings](#)[Questions](#)[Feedback](#)[Preview](#)[View All Responses](#)[Non-respondents](#)[Summary](#)[List of responses](#)[View Default order](#)[Ascending order](#)[Descending order](#)[Delete ALL Responses](#)[Download as CSV](#)

Visible groups [All participants](#) View All Responses. **All participants**. View Default order Responses: 117

## BATCH 2021-22

**1**

### Program Educational Objectives (PEO)

**Average rank**

1	2	3	4	5
---	---	---	---	---

1.Are you prepare globally competent graduates having strong fundamentals, domain knowledge, updated with modern technology to provide the effective solutions for engineering problems? **4.4**

2.Are you prepared graduates to work as a committed professional with strong professional ethics and values, sense of responsibilities, understanding of legal, safety, health, societal, cultural and environmental issues? **4.4**

3.Are you committed and motivated graduates with research attitude, lifelong learning, investigative approach, and multidisciplinary thinking? **4.4**

4.Are you prepared graduates with managerial and communication skills to work effectively as individual as well as in teams? **4.4**

Responses	1	2	3	4	5	Total
1.Are you prepare globally competent graduates having strong fundamentals, domain knowledge, updated with modern technology to provide the effective solutions for engineering problems?	1 (1%)	2 (2%)	11 (9%)	44 (38%)	59 (50%)	117
2.Are you prepared graduates to work as a committed professional with strong professional ethics and values, sense of responsibilities, understanding of legal, safety, health, societal, cultural and environmental issues?	0	1 (1%)	7 (6%)	55 (47%)	54 (46%)	117
3.Are you committed and motivated graduates with research attitude, lifelong learning, investigative approach, and multidisciplinary thinking?	0	2 (2%)	12 (10%)	42 (36%)	61 (52%)	117
4.Are you prepared graduates with managerial and communication skills to work effectively as individual as well as in teams?	0	1 (1%)	12 (10%)	43 (37%)	61 (52%)	117

2

**Program Outcomes (PO):**

	Average rank					
	1	2	3	4	5	
1.An ability to apply knowledge of mathematics ,Science and Engineering?				■		4.4
2.An ability to identify, formulate and solve engineering problems?				■		4.3
3.An ability to design a system ,component or process to meet desired needs with realistic constraints such as environmental, social, health and safety?				■		4.3
4.An ability to design and conduct experiments, as well as to analyze and interpret data?				■		4.3
5.An ability to use the techniques, skills, and modern engineering tools necessary for engineering practice?		■				4.4
6.Ability to apply reasoning to assess social, health, safety, legal and cultural issues.?				■		4.4
7.Ability to understand the impact of Engineering solution in environmental and social context for sustainable development?				■		4.3
8.An understanding of professional and ethical responsibility.?				■		4.4
9.An ability to function on multidisciplinary teams?				■		4.4
10.An ability to communicate effectively on complex engineering activities.?				■		4.4
11.An ability to apply the basic domain knowledge and management principles to manage projects individually and in multidisciplinary environment.?				■		4.3
12.Recognition of the need for, and an ability to engage in life-long learning.?				■		4.4

Responses	1	2	3	4	5	Total
1.An ability to apply knowledge of mathematics ,Science and Engineering?	0	1 (1%)	12 (10%)	44 (38%)	60 (51%)	117
2.An ability to identify, formulate and solve engineering problems?	0	4 (3%)	14 (12%)	40 (34%)	59 (50%)	117
3.An ability to design a system ,component or process to meet desired needs with realistic constraints such as environmental, social, health and safety?	0	3 (3%)	14 (12%)	42 (36%)	58 (50%)	117
4.An ability to design and conduct experiments, as well as to analyze and interpret data?	0	4 (3%)	13 (11%)	46 (39%)	54 (46%)	117
5.An ability to use the techniques, skills, and modern engineering tools necessary for engineering practice?	0	1 (1%)	15 (13%)	41 (35%)	60 (51%)	117
6.Ability to apply reasoning to assess social, health, safety, legal and cultural issues.?	0	1 (1%)	13 (11%)	44 (38%)	59 (50%)	117
7.Ability to understand the impact of Engineering solution in environmental and social context for sustainable development?	0	2 (2%)	12 (10%)	47 (40%)	56 (48%)	117
8.An understanding of professional and ethical responsibility.?	0	2 (2%)	7 (6%)	52 (44%)	56 (48%)	117
9.An ability to function on multidisciplinary teams?	1	2	9 (8%)	46	59	117

10.An ability to communicate effectively on complex engineering activities.?	0	2 (2%)	10 (9%)	47 (40%)	<b>58</b> (50%)	<b>117</b>
11.An ability to apply the basic domain knowledge and management principles to manage projects individually and in multidisciplinary environment.?	0	2 (2%)	12 (10%)	47 (40%)	<b>56</b> (48%)	<b>117</b>
12.Recognition of the need for, and an ability to engage in life-long learning.?	0	2 (2%)	8 (7%)	48 (41%)	<b>59</b> (50%)	<b>117</b>

3

**Program Specific Outcomes (PSO):**

	Average rank					
	1	2	3	4	5	
1.Are you able to Understand and solve problems using Mathematical Concepts, Algorithmic & Programming Knowledge.?						4.4
2.Are you able to design and develop software solutions using various programming environments for multidisciplinary applications?						4.4
3.Are you able to analyze complex engineering problems using core and advanced knowledge of CSE to provide better solution.?						4.4
4.Are you able to demonstrate awareness towards Professional Ethics, Environment Aspects, Social Issue and readiness for life long learning.?						4.4

Responses	1	2	3	4	5	Total
1.Are you able to Understand and solve problems using Mathematical Concepts, Algorithmic & Programming Knowledge.?	0	1 (1%)	7 (6%)	50 (43%)	<b>59</b> (50%)	<b>117</b>
2.Are you able to design and develop software solutions using various programming environments for multidisciplinary applications?	0	1 (1%)	14 (12%)	39 (33%)	<b>63</b> (54%)	<b>117</b>
3.Are you able to analyze complex engineering problems using core and advanced knowledge of CSE to provide better solution.?	0	2 (2%)	8 (7%)	52 (44%)	<b>55</b> (47%)	<b>117</b>
4.Are you able to demonstrate awareness towards Professional Ethics, Environment Aspects, Social Issue and readiness for life long learning.?	0	2 (2%)	10 (9%)	49 (42%)	<b>56</b> (48%)	<b>117</b>

[→ Announcements](#)

Jump to...

[BATCH 2013-2017 CSE\(session 2016-17\) \(hidden\)](#) ←



# Sipna Shikshan Prasarak Mandal's Sipna College of Engineering & Technology, Amravati

## Abhipraya: Online Feedback Management System

Home	Feedback Master	Load Distribution	Reports	Student Allocation	Logout
------	-----------------	-------------------	---------	--------------------	--------

**Select Session:**  
**Select Academic Year:**

Select Semester Type:    Odd Sem.:     Even Sem.:

Select Feedback Type:    Mid Session:     Post Session

Select Branch:

### 1. Theory Subject Analysis

Question	Subjects				
	7CE01 Theory of Structure- II	7CE02 Geotechnical Engineering- II	7CE03 Design of Steel Structures	7CE04 Environmental Engineering - I	7CE05 PE-I: Environmental Pollution & Rural Sanitation
1) Whether the lectures were well prepared, organized and course material is well structured?	88.70	84.64	87.25	89.86	89.57
2) Was The Blackbord writing/Audio Video Aids are cleared and organized?	88.99	84.06	88.99	87.83	90.14
3) Were The lectures Delivered with emphasis on Fundamental Concepts, illustrative examples and using proper analogy?	88.36	82.69	85.07	87.16	89.85
4) Whether the teacher engaged classes regularly and maintained the discipline?	89.25	83.58	88.36	88.66	90.45
5) Whether difficult topics were taught with adequate attention and ease?	87.46	84.18	86.57	88.36	89.55
6) Did faculty provide you new knowledge and has command over the subject?	89.25	83.28	86.57	88.06	90.15
7) Was the instructor enthusiastic about teaching?	88.96	84.18	88.36	89.25	91.64
8) Was the teacher able to deliver lecture with good communication skill?	88.96	86.87	88.66	90.15	91.94
9) Were you encourage to ask questions to make lectures interactive & lively?	89.85	85.07	87.76	89.55	91.04
10) Did course improve your understanding of concept,Principles in this field and motivated you to think & learn?	90.15	85.07	86.87	88.96	91.34
11) Whether teacher was an effective in preparing students for exam?	89.85	86.27	87.76	89.55	91.34
12) Were the Unit tests(Sessional Examinations) challenging?	92.54	87.76	88.96	90.15	90.75
13) Was the evaluation fair and impartial? Did it help you to improve?	89.85	88.66	88.96	90.75	90.45
14) Did Teacher give additional technical/Non Technical inputs by referring to internet/Additional Books?	89.85	85.97	88.96	89.85	91.34
15) Whether teacher was always accesible to the student for counselling, guidance and solving queries off classrooms hours?	91.34	88.96	89.55	92.24	91.94
<b>Total Score %</b>	89.51	85.39	87.86	89.35	90.72
Name of Faculty	Prof. M. D. Tare	Prof. R. B. Wath	Prof. A. S. Attal	Prof. Y. S. Khandekar	Dr. A. V. Tiwari





# Sipna Shikshan Prasarak Mandal's Sipna College of Engineering & Technology, Amravati

## Abhipraya: Online Feedback Management System

Home	Feedback Master	Load Distribution	Reports	Student Allocation	Logout
------	-----------------	-------------------	---------	--------------------	--------

**Select Session:** 2021-2022 ▼
**Select Academic Year:** FOURTH ▼

Select Semester Type:    Odd Sem.:     Even Sem.:

Select Feedback Type:    Mid Session:     Post Session

Select Branch: Computer Science & Engineering ▼

BECSB ▼

### 1. Theory Subject Analysis

Question	Subjects				
	7KS01 DIGITAL SIGNAL PROCESSING	7KS02 COMPUTER NETWORKS	7KS03 DESIGN AND ANLYSIS OF ALGORITHMS	7KS04 OBJECT ORIENTED ANLYSIS & DESIGN	7KS05 WEB ENGINEERING
1) Whether the lectures were well prepared, organized and course material is well structured?	91.62	90.81	90.54	89.46	91.62
2) Was The Blackbord writing/Audio Video Aids are cleared and organized?	89.73	89.46	90.00	88.38	90.27
3) Were The lectures Delivered with emphasis on Fundamental Concepts, illustrative examples and using proper analogy?	90.00	90.81	90.27	90.00	89.73
4) Whether the teacher engaged classes regularly and maintained the discipline?	90.27	89.73	90.81	90.81	90.54
5) Whether difficult topics were taught with adequete attention and ease?	90.00	90.00	90.54	90.81	91.08
6) Did faculty provide you new knowledge and has command over the subject?	90.81	90.54	91.89	91.62	90.54
7) Was the instructor enthusiastic about teaching?	91.62	92.43	92.16	92.43	91.62
8) Was the teacher able to deliver lecture with good communication skill?	91.35	91.62	91.35	91.62	92.16
9) Were you encourage to ask questions to make lectures interactive & lively?	90.81	91.35	91.35	90.81	91.35
10) Did course improve your understanding of concept, Priciples in this field and motivated you to think & learn?	90.00	90.27	89.19	89.19	89.46
11) Whether teacher was an effective in preparing students for exam?	90.54	91.35	90.54	91.35	90.00
12) Were the Unit tests(Sessional Examinations) challenging?	89.73	90.54	89.73	90.27	90.81
13) Was the evaluation fair and impartial? Did it help you to improve?	91.08	91.08	91.35	89.73	90.00
14) Did Teacher give additional technical/Non Technical inputs by refering to internet/Additional Books?	90.00	90.54	90.00	89.73	90.00
15) Whether teacher was always accesible to the student for counselling, guidance and solving queries off classrooms hours?	90.81	90.27	90.27	91.08	90.00
<b>Total Score %</b>	90.56	90.73	90.68	90.49	90.61
<b>Name of Faculty</b>	Prof. R. R. Gupta	Dr . A. A. Khodaskar	Prof. A. V. Pande	Prof. A. R. Itkikar	Prof. S. N. Sawalkar



# Sipna Shikshan Prasarak Mandal's Sipna College of Engineering & Technology, Amravati

## Abhipraya: Online Feedback Management System

Home	Feedback Master	Load Distribution	Reports	Student Allocation	Logout
------	-----------------	-------------------	---------	--------------------	--------

**Select Session:** 2021-2022 ▼
**Select Academic Year:** THIRD ▼

Select Semester Type:  Odd Sem.:  Even Sem.:

Select Feedback Type:  Mid Session:   Post Session

Select Branch: Electronics & Telecommunication Engineering ▼

TEETA ▼

### 1. Theory Subject Analysis

Question	Subjects				
	5ETC01 MICROCONTROLLER	5ETC02 CONTROL SYSTEM	5ETC03 DIGITAL SIGNAL PROCESSING	5ETC04_FOC FIBER OPTIC COMMUNICATION	5ETC04_PE POWER ELECTRONICS
1) Whether the lectures were well prepared, organized and course material is well structured?	90.95	90.95	89.05	83.53	92.17
2) Was The Blackbord writing/Audio Video Aids are cleared and organized?	89.52	88.10	87.62	84.71	86.09
3) Were The lectures Delivered with emphasis on Fundamental Concepts, illustrative examples and using proper analogy?	89.52	89.05	88.10	81.18	93.04
4) Whether the teacher engaged classes regularly and maintained the discipline?	88.57	87.14	88.57	84.71	86.96
5) Whether difficult topics were taught with adequete attention and ease?	87.62	87.14	87.14	82.35	87.83
6) Did faculty provide you new knowledge and has command over the subject?	89.52	89.52	87.62	84.71	89.57
7) Was the instructor enthusiastic about teaching?	91.43	90.48	90.95	83.53	91.30
8) Was the teacher able to deliver lecture with good communication skill?	90.00	89.52	89.05	85.88	90.43
9) Were you encourage to ask questions to make lectures interactive & lively?	90.00	90.00	89.52	85.88	88.70
10) Did course improve your understanding of concept,Principles in this field and motivated you to think & learn?	85.24	86.19	85.24	83.53	87.83
11) Whether teacher was an effective in preparing students for exam?	90.00	90.00	89.05	85.88	90.43
12) Were the Unit tests(Sessional Examinations) challenging?	90.95	90.00	91.90	89.41	92.17
13) Was the evaluation fair and impartial? Did it help you to improve?	92.86	91.90	91.90	89.41	91.30
14) Did Teacher give additional technical/Non Technical inputs by refering to internet/Additional Books?	89.52	89.52	89.05	84.71	91.30
15) Whether teacher was always accesible to the student for counselling, guidance and solving queries off classrooms hours?	88.57	88.57	88.57	83.53	92.17
<b>Total Score %</b>	89.61	89.21	88.89	84.86	90.1
<b>Name of Faculty</b>	Dr. N. N. Kasat	Dr. U. S. Ghate	Prof. B. S. Badak	Prof. A. H. Kadu	Prof. S. S. Tawani



# Sipna Shikshan Prasarak Mandal's Sipna College of Engineering & Technology, Amravati

## Abhipraya: Online Feedback Management System

Home	Feedback Master	Load Distribution	Reports	Student Allocation	Logout
------	-----------------	-------------------	---------	--------------------	--------

**Select Session:**  **Select Academic Year:**

Select Semester Type:  Odd Sem.:  Even Sem.:

Select Feedback Type:  Mid Session:   Post Session

Select Branch:

### 1. Theory Subject Analysis

Question	Subjects					
	7IT01 Digital Signal Processing	7IT02 Object Oriented Aalysis & Design	7IT03 Web Technology	7IT04 Real Time Eembeded Systems	7IT05_1 Distributed Database Management System	7IT05_2 Artificial Intelligence & Epert System
1) Whether the lectures were well prepared, organized and course material is well structured?	88.28	89.31	89.31	89.31	82.35	90.24
2) Was The Blackbord writing/Audio Video Aids are cleared and organized?	89.66	89.31	90.00	89.31	84.71	90.73
3) Were The lectures Delivered with emphasis on Fundamental Concepts, illustrative examples and using proper analogy?	88.97	90.69	90.34	89.66	89.41	90.24
4) Whether the teacher engaged classes regularly and maintained the discipline?	89.66	88.28	88.62	89.66	85.88	90.24
5) Whether difficult topics were taught with adequete attention and ease?	89.31	88.62	88.28	89.31	87.06	89.27
6) Did faculty provide you new knowledge and has command over the subject?	88.62	87.93	87.93	87.59	85.88	87.80
7) Was the instructor enthusiastic about teaching?	87.24	89.31	88.62	88.28	83.53	90.24
8) Was the teacher able to deliver lecture with good communication skill?	89.66	88.62	88.97	88.97	87.06	90.73
9) Were you encourage to ask questions to make lectures interactive & lively?	89.31	88.62	88.97	90.34	84.71	90.73
10) Did course improve your understanding of concept, Priciples in this field and motivated you to think & learn?	88.28	89.31	88.62	88.62	85.88	89.76
11) Whether teacher was an effective in preparing students for exam?	89.31	90.00	88.28	89.66	87.06	90.24
12) Were the Unit tests(Sessional Examinations) challenging?	89.66	88.97	89.31	89.31	88.24	89.76
13) Was the evaluation fair and impartial? Did it help you to improve?	90.00	90.34	89.31	89.31	87.06	89.76
14) Did Teacher give additional technical/Non Technical inputs by refering to internet/Additional Books?	90.34	88.97	89.31	88.97	87.06	90.24
15) Whether teacher was always accesible to the student for counselling, guidance and solving queries off classrooms hours?	88.62	88.62	88.28	88.97	87.06	88.29
<b>Total Score %</b>	89.12	89.13	88.94	89.15	86.2	89.88
<b>Name of Faculty</b>	Dr. S. V. Rode	Prof. Vanisha P. Vaidya	Prof. Ashwin J. Ade	Prof. S. R. Kamble	Prof. Jaykumar S. Karnewar	Prof. S. S. Deshmukh



# Sipna Shikshan Prasarak Mandal's Sipna College of Engineering & Technology, Amravati

## Abhipraya: Online Feedback Management System

Home	Feedback Master	Load Distribution	Reports	Student Allocation	Logout
------	-----------------	-------------------	---------	--------------------	--------

Select Session: 2021-2022 Select Academic Year: THIRD

Select Semester Type: Odd Sem.:  Even Sem.:

Select Feedback Type: Mid Session:  Post Session:

Select Branch: Mechanical Engineering

TEMEA

### 1. Theory Subject Analysis

Question	Subjects			
	5ME01 HEAT TRANSFER	5ME02 METROLOGY & QUALITY CONTROL	5ME03 KINEMATICS OF MACHINES	5ME04 MEASUREMENT SYSTEM
1) Whether the lectures were well prepared, organized and course material is well structured?	91.56	93.33	89.33	92.00
2) Was The Blackbord writing/Audio Video Aids are cleared and organized?	90.67	93.33	92.00	93.78
3) Were The lectures Delivered with emphasis on Fundamental Concepts, illustrative examples and using proper analogy?	91.11	91.56	92.89	94.22
4) Whether the teacher engaged classes regularly and maintained the discipline?	92.44	92.00	92.44	93.78
5) Whether difficult topics were taught with adequete attention and ease?	92.00	93.33	90.22	92.89
6) Did faculty provide you new knowledge and has command over the subject?	91.11	93.78	91.11	94.22
7) Was the instructor enthusiastic about teaching?	91.56	91.11	89.33	92.89
8) Was the teacher able to deliver lecture with good communication skill?	92.89	92.44	92.00	92.89
9) Were you encourage to ask questions to make lectures interactive & lively?	91.56	89.33	90.22	90.22
10) Did course improve your understanding of concept,Principles in this field and motivated you to think & learn?	90.22	91.11	90.22	93.33
11) Whether teacher was an effective in preparing students for exam?	91.56	92.89	91.11	93.33
12) Were the Unit tests(Sessional Examinations) challenging?	90.67	90.22	91.11	91.56
13) Was the evaluation fair and impartial? Did it help you to improve?	91.11	91.56	93.78	91.56
14) Did Teacher give additional technical/Non Technical inputs by refering to internet/Additional Books?	89.78	91.56	89.78	91.11
15) Whether teacher was always accesible to the student for counselling,guidance and solving queries off classrooms hours?	92.00	92.89	89.33	93.33
Total Score %	91.35	92.03	90.98	92.74
Name of Faculty	Prof. A. D. Bhandarkar	Prof. S. S. Jamkar	Prof. P. A. Ganthade	Dr. Gajanan P. Dhok